



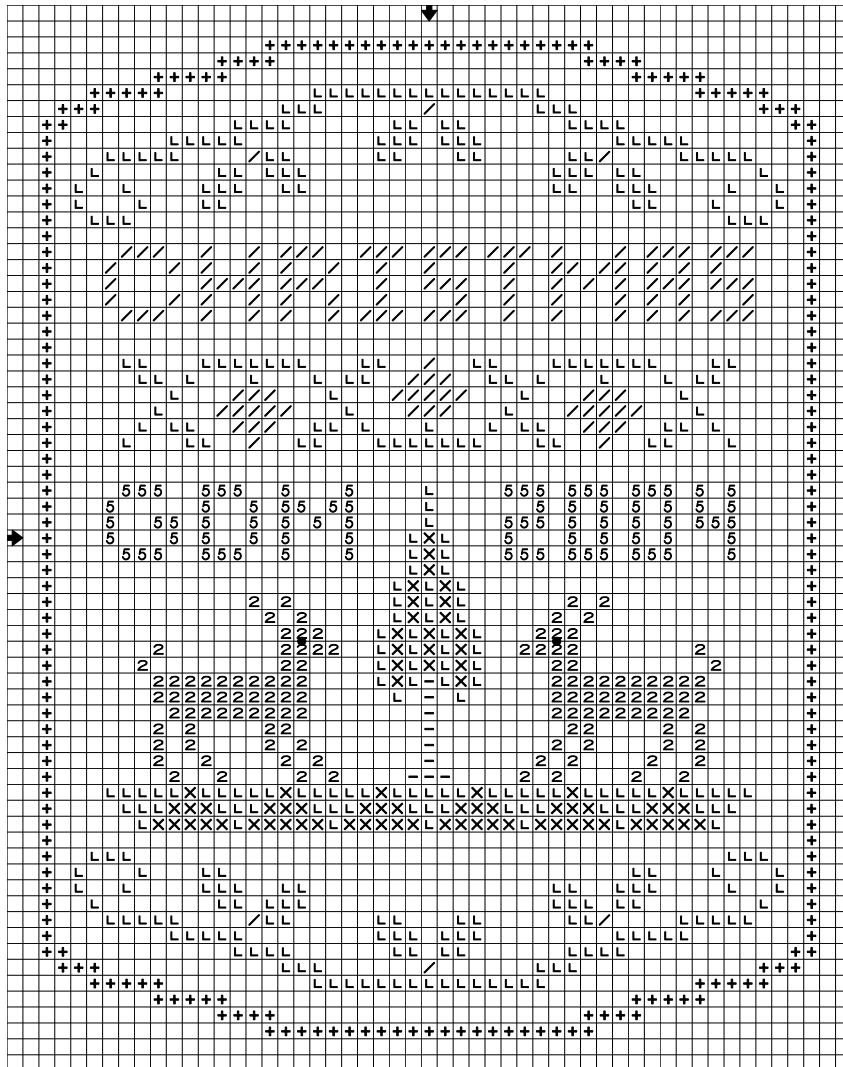
# Milady's Needle

Designs by  
Gloria Moorz



## Woodland Christmas

© 2004



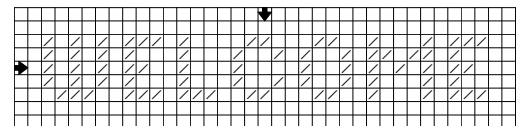
**Fabric:**  
32 count French Lace (Wichelt)  
25 count Platinum Dublin (Zweigart)

**Stitch Count:**  
49 w X 63 h

**Approximate Design Size:**  
Ornament: 3" X 4"  
Door Hanger: 4" X 5"

### Stitching Notes

1. Almost all stitching is done in cross stitch with 2 strands of Soie Crystale for ornament and 1 strand of Wildflowers for door hanger.
2. Blend 1 strand of 4003 and 1 strand of 1113 for lettering on ornament.
3. Deer's eyes are done in French Knots.
4. You could also use the word Welcome instead of Christmas for the door hanger.
5. Finish as either a small ornament or a door hanger.



Symbol	Caron Soie Crystale	Caron Wildflowers	Color	DMC
2	1112	1112	Brown-MD	433
X	5002	5061	Fern Green/Blue Green - DK	522/501
L	5061	140 Blackwatch	Blue Green - VY DK	934
+	0076	0076	Cornflower Blue-VY DK	791
5	4003/1113	085 Antique Brass	Old Gold-DK	680
/	2001	2001	Garnet-VY DK	902
-	1122	1131	Coffee Brown-UL DK	938

This graph is designed for free distribution, compliments of Milady's Needle. Needlework shops may reproduce this chart for their customer's stitching enjoyment. It may not be kitted or sold without express permission of Milady's Needle.

Milady's Needle  
1510 Briar Meadow Drive  
Keller, TX 76248  
817-427-4804  
[www.miladysneedle.com](http://www.miladysneedle.com)